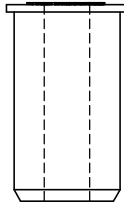
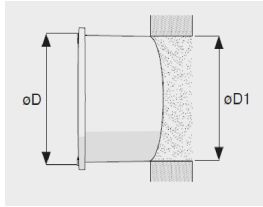
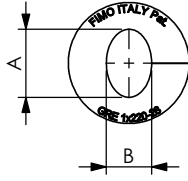
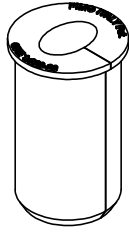


PRODUCT DATA SHEET



A) SPECIFICATIONS

Material: EPDM
UV resistant.
Colour: black.



B) PACKAGING INFORMATION

Packing in boxes.
Label indicating:
product code, article, quantity,
production batch,
FIMO logo and figure.
(Customer code on request).

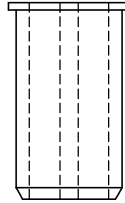
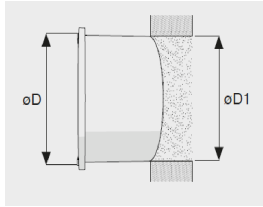
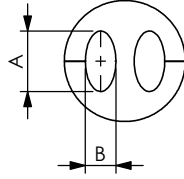
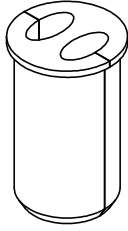
C) MOUNTING INSTRUCTIONS

On request

CODE	ARTICLE	ø D	ø D1	HOLES	AXB	WAVE GUIDES	BAG	BOX	WEIGHT	
61 1028 1150	GRE 1x 150 - 28	28	26÷28	1	28x17	E 150, EW 127, EW 127A	10	50	40	
61 1028 1190	GRE 1x 190 - 28		26÷28	1	20x12	E 190, E 185	10	50	40	
61 1028 1220	GRE 1x 220 - 28		26÷28	1	18x12	E 220	10	50	40	
61 1028 1250	GRE 1x 250 - 28		26÷28	1	16x11	E 250, EW 240	10	50	50	
61 1028 1300	GRE 1x 300 - 28		26÷28	1	14x10	E 300	10	50	60	
61 1028 1380	GRE 1x 380 - 28		26÷28	1	12x9	E 380	10	50	60	
61 0800 1040	GRE 1x 100 - 40	40	38÷40	1	34x24	E 100	10	50	44	
61 1038 1090	GRE 1x 90 - 40		38÷40	1	33x20	E 105, EW 90	10	50	44	
61 1038 1130	GRE 1x 130 - 40		38÷40	1	29x18	E 130	10	50	40	
61 1038 1132	GRE 1x 132 - 40		38÷40	1	24x15	EW 132	10	50	46	
61 1038 1150	GRE 1x 150 - 40		38÷40	1	28x17	E 150, EW 127, EW 127A	10	50	42	
61 1038 1180	GRE 1x 180 - 40		38÷40	1	20x12	EW 180	10	50	54	
61 1038 1190	GRE 1x 190 - 40		38÷40	1	21x13	E 190, E185	10	50	50	
61 1038 1220	GRE 1x 220 - 40		38÷40	1	18x12	E 220, EW 220	10	50	56	
61 1038 1240	GRE 1x 240 - 40		38÷40	1	16x11	E 250, EW 240	10	50	58	
61 1038 1380	GRE 1x 380 - 40		38÷40	1	12x9	E 380	10	50	60	
61 1050 1078	GRE 1x 77/78 - 50		50	48÷50	1	45x26	E 78, EW 77	10	50	128
61 1050 1105	GRE 1x105 - 50			48÷50	1	33x20	E 105, EW 85, EW 90	10	50	74
61 1062 1048	GRE 1x 48 - 62	62	60÷62	1	57x43	E 48	10	50	62	
61 1062 1052	GRE 1x 52 - 62		60÷62	1	57x33	EW 52	10	50	94t	
61 1062 1060	GRE 1x 60 - 62		60÷62	1	56x33	E 60	10	50	88	
61 1062 1062	GRE 1x 62 - 62		60÷62	1	49x33	E 62	10	50	105	
61 1062 1063	GRE 1x 63/65 - 62		60÷62	1	51x29	EW 63, E 65	10	50	102	
61 1062 1064	GRE 1x 64 - 62		60÷62	1	48x28	EW 64	10	50	108	
61 1062 1070	GRE 1x 70 - 62		60÷62	1	48x28	E 70	10	50	108	
61 1062 1077	GRE 1x 77/78 - 62		60÷62	1	43x25	E 78, EW 77	10	50	116	
61 1062 1105	GRE 1x105 - 62		60÷62	1	33x20	E 105, EW 85, EW90	10	50	138	
61 1062 1130	GRE 1x130 - 62		60÷62	1	29x18	E 130	10	50	146	
61 1062 1150	GRE 1x150 - 62		60÷62	1	28x17	E 150, EW 127, EW 127A	10	50	138	
61 1062 1190	GRE 1x190 - 62		60÷62	1	21x13	E 190, E 185	10	50	120	
61 1090 1037	GRE 1x 37/46 - 90		90	88÷90	1	72x46	EW 37, E46	10	20	254
61 1090 1038	GRE 1x 38 - 90			88÷90	1	84x48	E 38	10	20	214
61 1100 1038	GRE 1x 38 - 100	100	98÷100	1	84x51	E 38	10	20	244	

RI	DATE	DR	DATE	AP	Description:
02					GRE - Elliptical Cushions
01					
00	07/10/2011	E.B.	07/10/2011	A.V.	
1 ST EMISSION					
					Use: With elliptical holes for waveguides. Suitable to different FIMO wall entries and various cable clamps.

PRODUCT DATA SHEET



A) SPECIFICATIONS

Material: EPDM
UV resistant.
Colour: black.

B) PACKAGING INFORMATION

Packing in boxes.
Label indicating:
product code, article, quantity,
production batch,
FIMO logo and figure.
(Customer code on request).

C) MOUNTING INSTRUCTIONS

On request

CODE	ARTICLE	ø D	ø D1	HOLES	AXB	WAVE GUIDES	BAG	BOX	WEIGHT
61 1038 2180	GRE 2x 180 - 40	40	38÷40	2	20x12	-	10	50	44
61 1038 2190	GRE 2x 190 - 40		38÷40	2	21x14	E 190, E185, EW 180	10	50	38
61 1038 2220	GRE 2x 220 - 40		38÷40	2	18x12	E 220, EW 220	10	50	43
61 1038 2380	GRE 2x 380 - 40		38÷40	2	12x9	E 380	10	50	48
61 1050 2105	GRE 2x105 - 50	50	48÷50	2	33x20	E 105, EW 85, EW90	10	50	80
61 1050 2130	GRE 2x130 - 50		48÷50	2	29x18	E 130	10	50	64
61 1050 2150	GRE 2x 150 - 50		48÷50	2	28x17	E 150, EW 127, EW127A	10	50	76

RI	DATE	DR	DATE	AP	Description:
02					GRE - Elliptical Cushions
01					
00	07/10/2011	E.B.	07/10/2011	A.V.	
1 ST EMISSION					
					Use: With elliptical holes for waveguides. Suitable to different FIMO wall entries and various cable clamps.