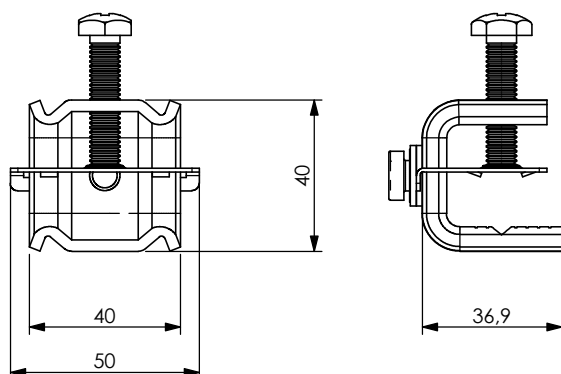


PRODUCT DATA SHEET

A) SPECIFICATIONS

- 1 Stainless steel VCI 8x35 screw
- 2 Stainless steel bow MCI M8 Aisi 304
- 3 Stainless steel pressure plate PPV3-8
- 4 Stainless steel VCI 8x10 screw
- 5 Stainless steel elastic washer REI 8
- 6 Stainless steel pfalt washer RPI8/15



B) RESISTANCE TESTS

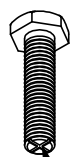
UV Test BS-ISO 105-B06
Vibration test conforming to UNI 60068-2-6

C) PACKAGING INFORMATION

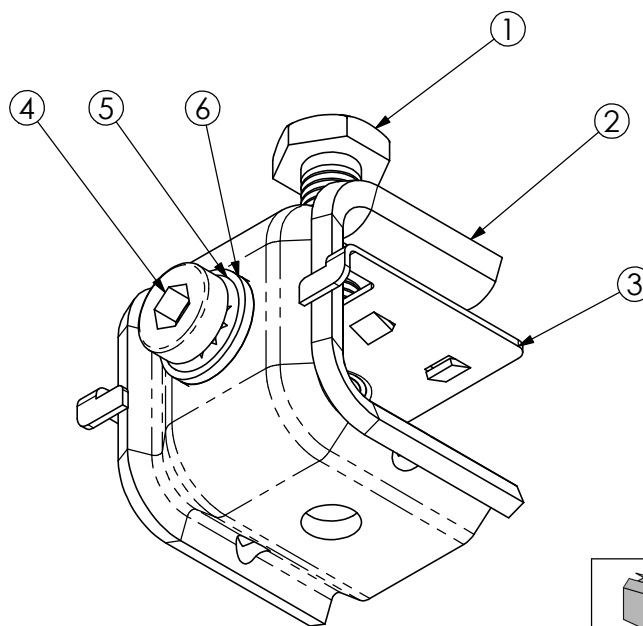
Packing in boxes.
Label indicating:
product code, article, quantity,
production batch,
FIMO logo and figure.
(Customer code on request).

D) MOUNTING INSTRUCTIONS

On request





detail of self-locking screw



code	6115231003
article	MCM/8V

20	0.1332kg

RI	DATE	DR	DATE	AP	Description: MCM/8V=compact clamp 8-25 VCI+REI
02					
01					
00	17/06/2015	E.B.	17/06/2015	A.V.	
	1 ST EMISSION				
					Use: Enbloc bidirectional mini clamp with a patented ribbed, self centring pressure plate and patented self-locking M8 screw

FI.MO.TEC. S.p.a. reserves the right to modify the technical specifications without prior notice, according to the technical progress
Copyright FI.MO.TEC. S.p.a. All rights reserved.